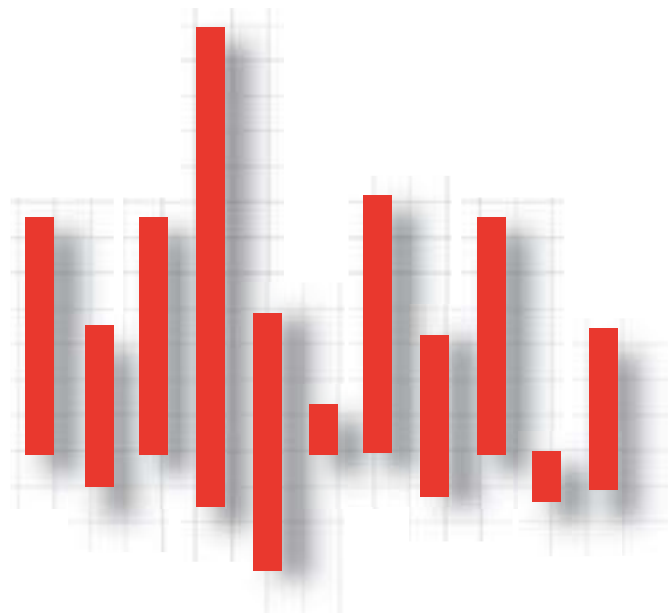


Johnson Redbook[®] Retail Sales Monthly

A Comprehensive Analysis
of Same-store Sales Data

June 2009

Catlin Levis
+1 646.201.4064
catlin.levis@redbookresearch.com



June 2009

Our 33-company **Johnson Redbook Same-store Sales Index (SSI)** was down 5.1% following a 4.6% drop in May and a 0.5% gain in April. Among the retailers, 21% posted positive comps and 79% posted negative results.

Sales results were negatively impacted by the effect of stimulus checks last year as well as unseasonably cool and wet weather which dampened demand for summer merchandise across all seasonal categories such as apparel and air conditioners. Customers are facing rising unemployment and rising gasoline prices further discouraging discretionary spending. Food and household supplies demand remained strong. The apparel specialty sector fell 5.8% year-over-year, the biggest drop since January. Meanwhile, **TJX, Ross Stores, JC Penney, Aeropostale** lifted second quarter earnings targets as shoppers seek value on improving trends. Retailers were more aggressive in discounting. Inventory levels at many retailers were tight and will continue to be so this month as retailers make room for back-to-school merchandise.

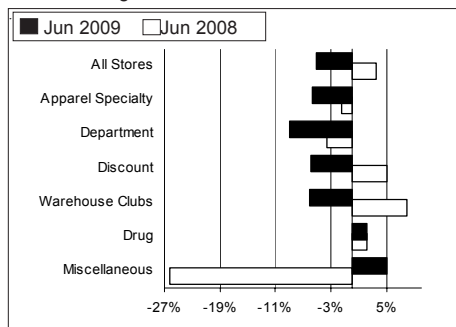
The leading format was drug stores, +2.2%. One double-digit gainer was **Aeropostale**, +12%. There were thirteen double-digit laggards.

July 10, 2009

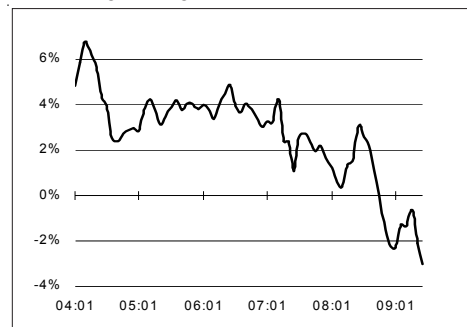
Contents

Sector Tables & Charts	4
June 2009 Sales	6
Quarters & Years	8
Historical Sales Data	10
Apparel Sub-lines	12
Company Rankings	14

X1. Sales by Format
YoY% change in same-store sales



X2. Johnson Redbook SSI
3m trailing average



STORE FORMATS

same-store yoy %change

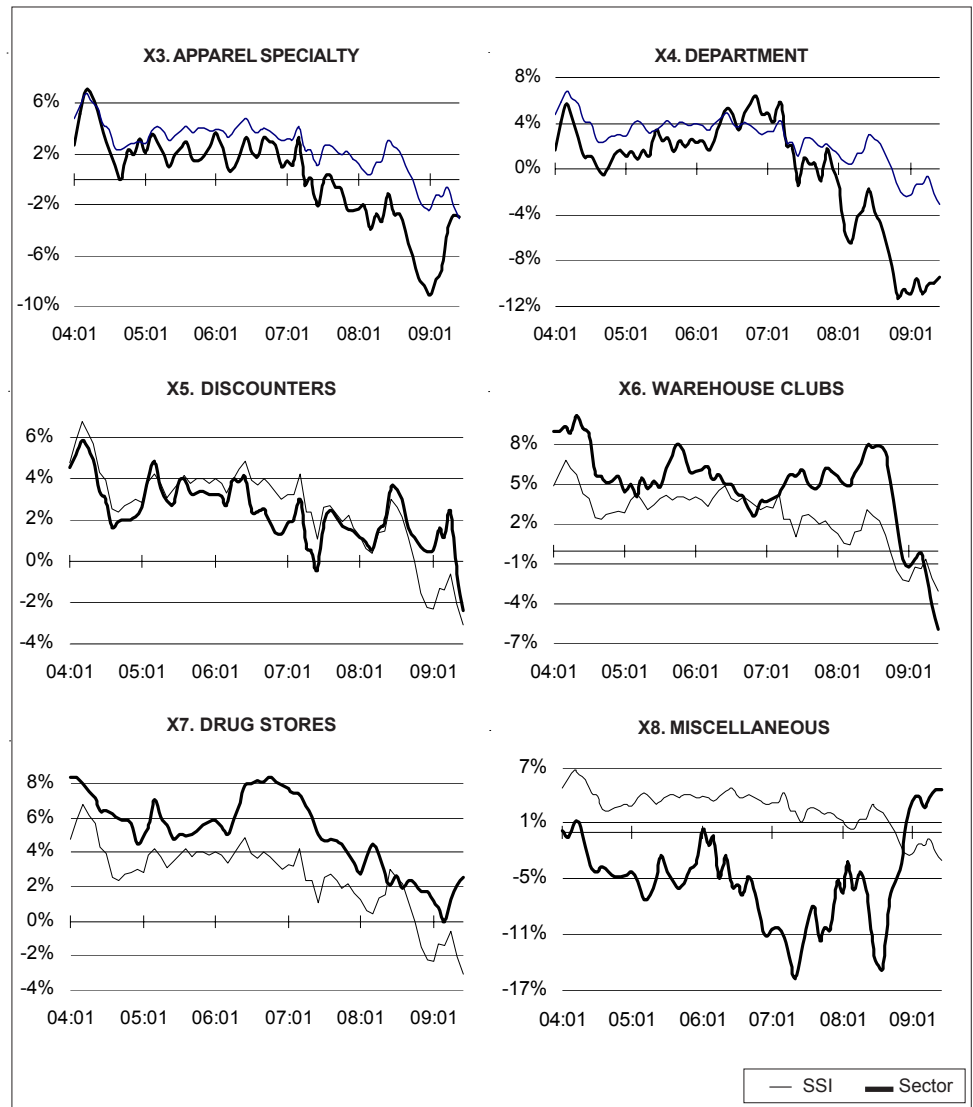
	SSI*	Apparel	Department	Discount	Club	Drug	Misc	All-store
YEARS								
2009 td	-1.9	-4.0	-9.8	1.2	-3.2	1.3	3.8	0.0
2008	0.3	-5.4	-7.0	1.6	4.2	2.4	-9.1	3.9
2007	2.0	-0.9	-0.5	1.4	5.3	4.8	-8.3	6.7
2006	3.6	1.8	4.4	2.4	4.2	7.5	-7.1	9.7
2005	3.9	2.4	2.3	3.5	6.0	5.6	-4.1	10.3
QUARTERS								
2009:07 td	-4.8	-4.2	-9.2	-6.0	-6.5	1.5	4.0	-2.5
2009:04	-0.7	-3.9	-10.2	2.2	-1.6	1.2	3.7	1.1
2009:01	-2.3	-8.7	-9.9	0.5	-1.4	1.2	3.4	0.0
2008:10	0.0	-5.9	-8.6	1.2	5.2	2.1	-0.1	3.2
2008:07	2.7	-2.6	-3.8	3.6	7.8	2.6	-14.4	6.9
MONTHS								
2009:06	-5.1	-5.8	-9.1	-6.0	-6.2	2.2	5.0	-2.7
2009:05	-4.6	-2.2	-9.4	-5.9	-7.0	0.9	3.0	-2.3
2009:04	0.5	-1.0	-9.8	4.8	-4.7	4.6	6.0	2.0
2009:03	-2.2	-5.2	-10.9	-0.7	-0.6	0.9	5.0	-0.4
2009:02	-0.2	-5.3	-9.8	3.3	0.5	-1.6	0.0	2.0
2009:01	-1.8	-11.0	-12.2	1.0	-0.4	0.6	3.0	0.9
2008:12	-1.9	-7.6	-6.8	0.5	-2.1	3.4	9.0	0.3
2008:11	-3.3	-9.0	-13.6	0.2	-1.3	-0.6	-2.0	-1.2
2008:10	-1.5	-8.8	-11.2	0.8	1.5	2.3	-4.0	1.2
2008:09	0.3	-5.7	-8.9	1.0	6.4	3.4	-4.0	3.4
2008:08	1.1	-3.6	-5.6	1.7	7.7	0.9	8.0	4.9
2008:07	1.9	-3.0	-5.0	2.2	8.1	2.8	-10.0	5.7
2008:06	3.5	-1.6	-3.6	5.1	7.9	2.1	-26.2	7.2
3m avg	-2.5	-3.2	-9.4	1.3	-5.8	2.5	4.7	-0.6

* The SSI (Johnson Redbook Same-store Sales Index) is a sales-weighted average of year-on-year same-store sales growth at about 75 general merchandise and apparel retailers. Same-store sales are sales at stores open for at least 12 months. In the table, all columns show same-store sales except for the final column, "All-store". See page 6 for companies in each format.

The table reflects data as it was originally released by the company. It would not reflect any subsequent restatements.

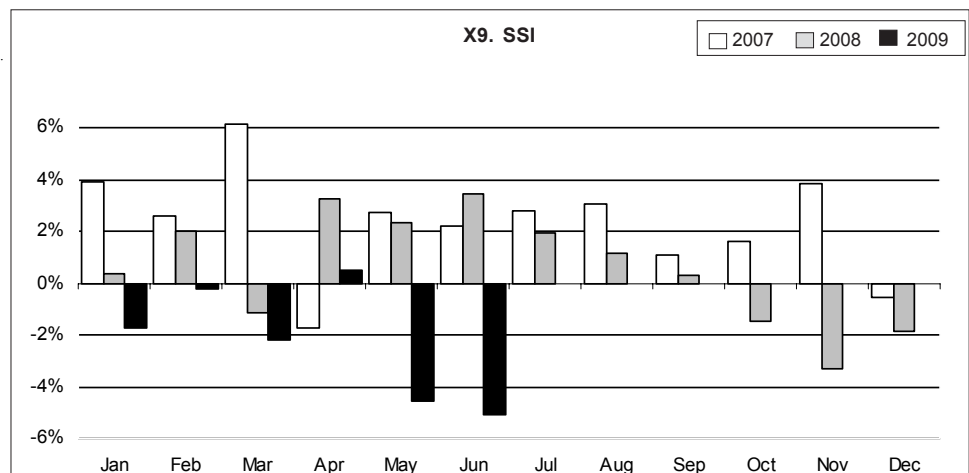
Source: Company reports, Redbook estimates.

SECTOR PERFORMANCE



Charts (X3 to X8) show 3-month trailing average of same-store sales yoy % change as reported monthly by retailers. Groups are sales-weighted. **Chart (X9)** shows Redbook Same-store Sales Index (SSI).

Source: Company reports, Redbook estimates.



JUNE SALES

The table shows latest results released by retailers, as well as sales-weighted sector averages. Fiscal YTD data are as provided by the company, and therefore reflect individual fiscal years. Most, but not all, retailers in the table are on standard retail fiscal years ending in January. The table is ordered by group, then company.

	June				Fiscal YTD (to June)			
	Same-Store Jun 2009 %	ΔYoY Jun 2008 %	Total-Store June Sales \$mln	2009 ΔYoY %	Same-Store 2009 %	ΔYoY 2008 %	Total-Store Sales \$mln	2009 ΔYoY %
All Companies	-5.1	3.5	.	-2.7	-2.9	2.7	.	-0.3
Apparel Specialty	-5.8	-1.6	.	-4.2	-3.9	-3.0	.	-2.7
Department Stores	-9.1	-3.6	.	-7.7	-9.0	-5.1	.	-7.6
Discount Stores	-6.0	5.1	.	-2.5	-4.5	2.4	.	-0.8
Warehouse Clubs	-6.2	7.9	.	-4.1	-3.1	7.0	.	-1.4
Drug Stores	2.2	2.1	.	5.6	1.8	3.8	.	6.1
Miscellaneous	5.0	-1.0	.	0.0	4.0	-3.0	.	-2.0

Apparel Specialty

ANF	Abercrombie & Fitch	-32.0	-3.0	230.4	-26.0	-30.0	-3.0	1,025.0	-24.0
ARO	Aeropostale	12.0	12.0	163.2	20.0	12.0	10.0	704.2	23.0
APP	American Apparel	-13.0	16.0	n.d	n.d	n.d	n.d	n.d	n.d
AEOS	American Eagle	-11.0	-11.0	246.1	-4.0	-10.0	-8.0	1,054.0	-4.0
BKE	The Buckle	9.6	28.9	70.8	14.4	15.2	28.0	331.1	21.2
CTR	Cato Corp.	-3.0	4.0	86.8	-2.0	1.0	0.0	403.0	2.0
PLCE	Children's Place	-12.0	18.0	111.9	-9.0	-3.0	9.0	615.5	-3.0
DEST	Destination Maternity	-10.7	0.8	41.3	-10.0	n.d	n.d	n.d	n.d
GPS	Gap Inc.	-10.0	-7.0	1,290.0	-9.0	-8.0	-11.0	5,450.0	-7.0
HOTT	Hot Topic	-7.9	-0.3	59.5	-5.8	1.2	-1.8	280.7	4.1
LTD	Limited Inc.	-12.0	-9.0	891.8	-12.7	-9.0	-8.0	3,236.0	-10.3
ROST	Ross Stores	1.0	8.0	666.0	6.0	3.0	5.0	2,922.0	8.0
SSI	Stage Stores	-12.6	1.2	128.0	-10.1	-9.5	-2.9	578.0	-6.5
SMRT	Stein Mart	-8.0	-7.7	108.8	-11.3	-6.5	-9.6	533.7	-8.5
TJX	TJX Companies	4.0	5.0	1,840.0	4.0	3.0	4.0	7,680.0	2.0
WTSLA	Wet Seal	-11.1	-2.9	51.6	-9.3	n.d	n.d	n.d	n.d
ZUMZ	Zumiez	-19.3	-3.4	32.0	-7.9	n.d	n.d	n.d	n.d

		June				Fiscal YTD (to June)			
		Same-Store Jun 2009 %	ΔYoY Jun 2008 %	Total-Store Sales \$mIn	June 2009 ΔYoY %	Same-Store 2009 %	ΔYoY 2008 %	Total-Store Sales \$mIn	2009 ΔYoY %
Department Stores									
BONT	Bon-Ton Stores	-8.0	-6.5	241.5	-7.5	-9.1	-6.0	1,075.0	-8.6
DDS	Dillard's, Inc.	-14.0	-5.0	497.2	-16.0	-13.0	-6.0	2,344.3	-15.0
KSS	Kohl's Corp.	-5.6	2.3	1,471.0	-1.5	-3.8	-4.8	6,365.0	0.7
M	Macy's	-8.9	-2.1	2,045.0	-9.1	-9.0	-9.1	8,988.0	-9.4
NMGa	Neiman Marcus	-20.8	-2.4	323.0	-19.4	n.d	n.d	n.d	n.d
JWN	Nordstrom	-10.0	-18.6	686.0	-6.2	-12.5	-6.2	3,045.0	-8.4
JCP	JC Penney (stores)	-8.2	-2.4	1,495.0	-6.7	-7.8	-5.7	6,633.0	-6.2
SKS	Saks Inc.	-4.4	1.9	230.2	-3.8	-23.2	4.0	1,011.3	-22.5
Discount Stores									
DUCK	Duckwall-ALCO	-4.3	0.8	48.0	-3.4	2.2	-4.9	204.6	5.4
FRED	Fred's	0.2	6.5	174.9	1.0	1.7	3.2	768.1	-2.0
TGT	Target Corp.	-6.2	0.4	5,690.0	-2.6	-4.7	-0.5	24,510.0	-0.8
Warehouse Clubs									
BJ	BJ's Wholesale	-7.5	16.5	1,001.0	-4.8	-4.1	12.0	4,043.0	-2.0
COST	Costco Companies	-6.0	9.0	6,880.0	-4.0	-3.0	8.0	59,020.0	-1.4
Drug Stores									
RAD	Rite Aid	-0.6	-0.4	1,973.0	-2.5	0.3	0.9	8,479.0	-1.5
WAG	Walgreen	3.4	3.4	5,236.4	9.0	2.1	4.4	52,868.2	7.4
Miscellaneous									
TLF	Tandy Leather Factory	5.0	-1.0	4.5	0.0	4.0	-3.0	26.6	-2.0

Most stores reported June as 5 weeks, and FY2009 as 22 weeks, to 07/04/09. n.d = not disclosed or not available.

QUARTERLY & ANNUAL SALES

The table shows quarterly and annual results compiled by Redbook from data released by retailers. Both quarters and years are based on the standard retail fiscal calendar (fiscal years end in January), and may not correspond with totals generated on a company fiscal-year basis. Data are generated by totalling monthly sales data for the appropriate period, and may not reflect subsequent revisions to this data. The table is ordered alphabetically by company. APPS = apparel specialty stores. DEPT = department stores. DISC = discount stores. DRUG = drug stores. MISC = miscellaneous. WHSE = warehouse clubs.

		YoY% change in same-store sales										
		Grp	Quarters ending:					Fiscal Years				
			07/09td	04/09	1/09	10/08	07/08	2009td	2008	2007	2006	2005
ANF	Abercrombie & Fitch	APPS	-30.3	-29.3	-24.4	-14.2	-3.9	-29.7	-13.2	-1.2	1.7	25.7
ARO	Aeropostale	APPS	15.0	10.4	6.4	7.1	10.7	12.3	8.0	3.5	1.9	3.3
APP	American Apparel	APPS	n.d	n.d	n.d	n.d	n.d	n.d	n.d	n.d	n.d	n.d
AEOS	American Eagle	APPS	-9.3	-10.1	-16.1	-7.3	-9.1	-9.8	-10.3	1.3	11.7	15.5
BJ	BJ's Wholesale	WHSE	-7.2	-1.5	1.8	11.9	15.6	-4.1	9.5	3.9	1.4	3.6
BONT	Bon-Ton Stores	DEPT	-9.9	-8.5	-9.7	-8.3	-5.7	-9.1	-7.4	-4.3	-2.7	-1.6
BKE	The Buckle	APPS	11.3	17.7	14.2	19.1	27.7	15.1	20.5	13.2	-0.1	1.6
CTR	Cato Corp.	APPS	-3.0	3.4	-3.0	-2.5	1.9	0.7	-1.2	-4.0	1.0	4.5
PLCE	Children's Place	APPS	-10.6	0.8	-4.6	1.2	8.7	-3.4	1.8	1.9	11.0	9.0
COST	Costco Companies	WHSE	-6.5	-5.4	-3.8	5.0	9.3	-5.8	4.2	6.5	6.3	7.8
DEST	Destination Maternity	APPS	-7.8	-4.2	-0.9	4.0	2.7	-5.6	1.4	-5.0	2.2	-0.1
DDS	Dillard's, Inc.	DEPT	-13.1	-13.2	-7.4	-9.3	-3.5	-13.2	-6.5	-5.1	-1.3	0.5
DUCK	Duckwall-ALCO	DISC	-4.2	6.2	-3.4	-6.3	-2.1	1.3	-4.5	2.8	6.1	3.0
FRED	Fred's	DISC	0.2	2.8	-1.1	1.5	5.0	1.7	1.8	0.2	2.6	1.4
GPS	Gap Inc.	APPS	-8.3	-7.8	-14.5	-11.7	-10.4	-8.0	-12.1	-4.5	-6.6	-5.1
HOTT	Hot Topic	APPS	-7.3	7.1	5.2	1.0	-0.9	1.2	1.0	-4.3	-6.6	-3.5
KSS	Kohl's Corp.	DEPT	-3.3	-4.2	-9.1	-6.8	-4.6	-3.8	-7.0	-1.0	6.0	3.6
LTD	Limited Inc.	APPS	-10.0	-7.5	-10.3	-7.3	-7.1	-8.7	-8.3	-2.5	7.0	-0.7
M	Macy's	DEPT	-9.0	-9.0	-7.0	-6.0	-2.1	-9.0	-4.7	-1.4	4.9	0.4

		YoY% change in same-store sales										
		Grp	Quarters ending:					Fiscal Years				
			07/09td	04/09	01/09	10/08	07/08	2009td	2008	2007	2006	2005
NMGa	Neiman Marcus	DEPT	-21.9	-25.1	-22.8	-14.5	-1.4	-23.8	-11.4	5.7	6.8	8.0
JWN	Nordstrom	DEPT	-11.5	-13.2	-12.5	-11.0	-6.0	-12.5	-9.1	3.7	7.5	6.1
JCP	JC Penney (stores)	DEPT	-8.2	-7.5	-10.8	-10.1	-4.3	-7.8	-8.5	-1.2	3.7	3.0
RAD	Rite Aid	DRUG	0.1	0.0	0.2	1.8	0.7	0.0	1.1	1.3	3.5	0.9
ROST	Ross Stores	APPS	2.4	3.4	-1.1	-0.4	6.4	2.9	1.8	1.5	3.7	6.4
SKS	Saks Inc.	DEPT	-15.1	-27.7	-15.4	-11.5	-4.0	-23.3	-6.3	11.6	4.2	2.1
SSI	Stage Stores	APPS	-10.1	-9.0	-7.2	-10.2	-1.4	-9.5	-6.1	-1.0	3.5	5.4
SMRT	Stein Mart	APPS	-4.2	-8.0	-12.0	-12.7	-9.7	-6.5	-10.9	-4.0	-1.2	0.2
TJX	TJX Companies	APPS	4.5	1.8	-2.8	-2.3	3.5	2.9	0.2	2.4	4.1	2.0
TLF	Tandy Leather Factory	MISC	4.0	3.7	3.4	-0.1	n.d	3.8	1.5	n.d	n.d	n.d
TGT	Target Corp.	DISC	-6.2	-3.7	-5.9	-3.3	-0.4	-4.7	-2.9	2.9	4.7	5.8
WAG	Walgreen	DRUG	2.2	1.7	1.6	2.5	3.8	1.9	3.1	6.0	8.8	7.6
WTSLA	Wet Seal	APPS	-9.9	-7.3	-13.4	-7.6	-4.3	-8.4	-8.5	-1.2	6.3	44.5
ZUMZ	Zumiez	APPS	-19.9	-15.3	-13.4	-5.8	-1.7	-17.3	-6.5	9.1	13.0	14.3

Source: Company reports, Redbook estimates. n.d = not disclosed or not available.

HISTORICAL SALES DATA

The table shows year-on-year same-store sales growth rates by month over the past 13 months. Data are as provided by the company at the time of original disclosure, and may not reflect any subsequent revisions or restatements. Companies are listed alphabetically.

		YoY% change in same-store sales													
		Grp	6/09	5/09	4/09	3/09	2/09	1/09	12/08	11/08	10/08	9/08	8/08	7/08	6/08
ANF	Abercrombie & Fitch	APPS	-32.0	-28.0	-22.0	-34.0	-30.0	-20.0	-24.0	-28.0	-20.0	-14.0	-11.0	-7.0	-3.0
ARO	Aeropostale	APPS	12.0	19.0	20.0	3.0	11.0	11.0	12.0	-5.0	1.0	5.0	13.0	13.0	12.0
APP	American Apparel	APPS	-13.0	-10.0	-7.0	-11.0	-9.0	n.d	n.d	n.d	n.d	n.d	n.d	n.d	n.d
AEOS	American Eagle	APPS	-11.0	-7.0	-5.0	-16.0	-7.0	-22.0	-17.0	-11.0	-12.0	-6.0	-5.0	-7.0	-11.0
BJ	BJ's Wholesale	WHSE	-7.5	-6.8	-4.9	-0.1	0.6	-0.7	1.6	4.1	10.2	10.4	15.4	16.7	16.5
BONT	Bon-Ton Stores	DEPT	-8.0	-12.1	-5.1	-11.2	-8.5	-8.2	-5.8	-16.0	-11.1	-4.6	-10.3	0.7	-6.5
BKE	The Buckle	APPS	9.6	13.4	18.2	14.7	21.0	14.7	13.5	15.0	14.5	19.7	22.4	20.9	28.9
CTR	Cato Corp.	APPS	-3.0	-3.0	11.0	-6.0	8.0	-10.0	-2.0	2.0	4.0	-3.0	-8.0	-1.0	4.0
PLCE	Children's Place	APPS	-12.0	-9.0	5.0	-2.0	0.0	-11.0	0.0	-7.0	4.0	0.0	0.0	0.0	16.0
COST	Costco Companies	WHSE	-6.0	-7.0	-8.0	-5.0	-3.0	-2.0	-4.0	-5.0	-1.0	7.0	9.0	10.0	9.0
DEST	Destination Maternity	APPS	-10.7	-5.4	-1.2	-7.6	-3.5	5.1	-6.9	0.6	6.0	-1.3	7.2	2.8	0.8
DDS	Dillard's, Inc.	DEPT	-14.0	-12.0	-6.0	-19.0	-13.0	-12.0	-5.0	-9.0	-8.0	-12.0	-7.0	2.0	-5.0
DUCK	Duckwall-ALCO	DISC	-4.3	-4.0	6.1	3.8	9.4	5.6	-6.3	-4.2	-2.7	-5.1	-11.1	-6.0	0.8
FRED	Fred's	DISC	0.2	0.2	5.0	1.9	1.8	-1.9	0.0	-1.8	1.3	1.1	2.1	4.6	6.5
GPS	Gap Inc.	APPS	-10.0	-6.0	-4.0	-8.0	-12.0	-23.0	-14.0	-10.0	-16.0	-11.0	-8.0	-11.0	-7.0
HOTT	Hot Topic	APPS	-7.9	-6.4	3.1	7.1	10.8	6.0	4.3	6.5	8.3	-1.8	-2.7	-2.1	-0.3
KSS	Kohl's Corp.	DEPT	-5.6	-0.4	-6.2	-4.3	-1.6	-13.4	-1.4	-17.5	-9.0	-5.5	-5.8	-10.4	2.3
LTD	Limited Inc.	APPS	-12.0	-7.0	-6.0	-9.0	-7.0	-9.0	-10.0	-12.0	-9.0	-6.0	-7.0	-5.0	-9.0
M	Macy's	DEPT	-8.9	-9.1	-9.1	-9.2	-8.5	-4.5	-4.0	-13.3	-6.3	-6.6	-4.8	-2.9	-2.1

		YoY% change in same-store sales													
		Grp	6/09	5/09	4/09	3/09	2/09	1/09	12/08	11/08	10/08	9/08	8/08	7/08	6/08
NMGA	Neiman Marcus	DEPT	-20.8	-23.3	-22.5	-29.9	-20.9	-24.4	-27.5	-11.9	-26.8	-12.9	-0.5	-1.7	-2.4
JWN	Nordstrom	DEPT	-10.0	-13.1	-10.8	-13.5	-15.4	-11.4	-10.6	-15.9	-15.7	-9.6	-7.9	-6.1	-18.6
JCP	JC Penney (stores)	DEPT	-8.2	-8.2	-6.6	-7.2	-8.8	-16.4	-8.1	-11.9	-13.0	-12.4	-4.9	-6.5	-2.4
RAD	Rite Aid	DRUG	-0.6	0.6	1.8	-0.7	-0.9	1.0	-0.2	0.0	2.9	1.7	1.1	1.2	-0.4
ROST	Ross Stores	APPS	1.0	4.0	6.0	3.0	1.0	-2.0	0.0	-2.0	-2.0	-2.0	3.0	4.0	8.0
SKS	Saks Inc.	DEPT	-4.4	-26.6	-32.0	-23.6	-26.0	-23.7	-19.8	-5.2	-16.6	-10.9	-5.9	-5.3	1.9
SSI	Stage Stores	APPS	-12.6	-7.2	-1.5	-15.0	-8.6	-13.1	-4.9	-8.0	-8.4	-13.6	-8.3	-6.2	1.2
SMRT	Stein Mart	APPS	-8.0	0.2	-12.3	-1.4	-12.2	-16.7	-8.5	-14.2	-12.5	-14.8	-9.9	-8.7	-7.7
TJX	TJX Companies	APPS	4.0	5.0	3.0	2.0	0.0	-4.0	0.0	-6.0	-6.0	-1.0	0.0	3.0	5.0
TLF	Tandy Leather Factory	MISC	5.0	3.0	6.0	5.0	0.0	3.0	9.0	-2.0	-4.0	-4.0	8.0	n.d	n.d
TGT	Target Corp.	DISC	-6.2	-6.1	0.3	-6.3	-4.1	-3.3	-4.1	-10.4	-4.8	-3.0	-2.1	-1.2	0.4
WAG	Walgreen	DRUG	3.4	1.0	5.7	1.5	-1.9	0.4	4.9	-0.9	2.0	4.7	0.9	4.1	3.4
WTSLA	Wet Seal	APPS	-11.1	-8.4	-2.2	-11.4	-6.6	-14.7	-12.5	-13.9	-6.2	-7.5	-8.7	-8.2	-2.9
ZUMZ	Zumiez	APPS	-19.3	-20.7	-13.8	-17.9	-13.4	-14.8	-12.3	-15.0	-13.1	-9.0	0.2	-1.4	-3.4

Source: Company reports, Redbook estimates. n.d = not disclosed or not available.

APPAREL SALES

The table shows year-on-year same-store sales growth of various apparel sublines (women, men, etc.). Data are at store level (see classification below).

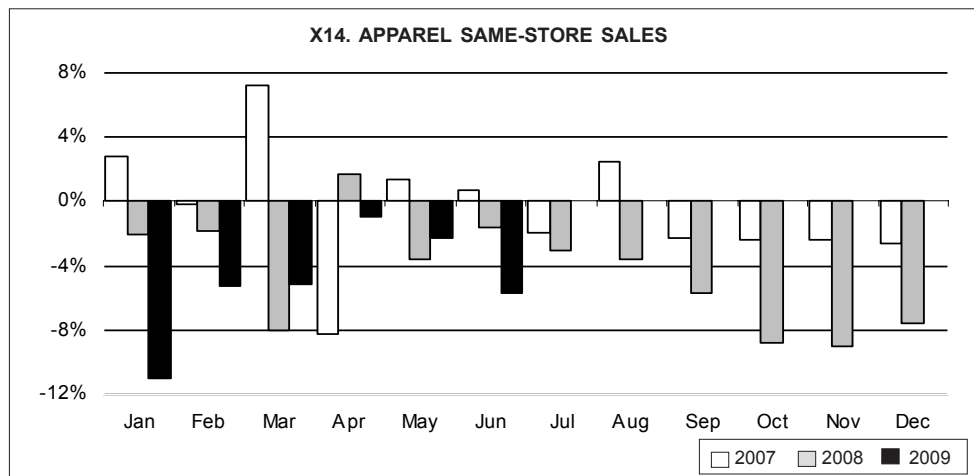
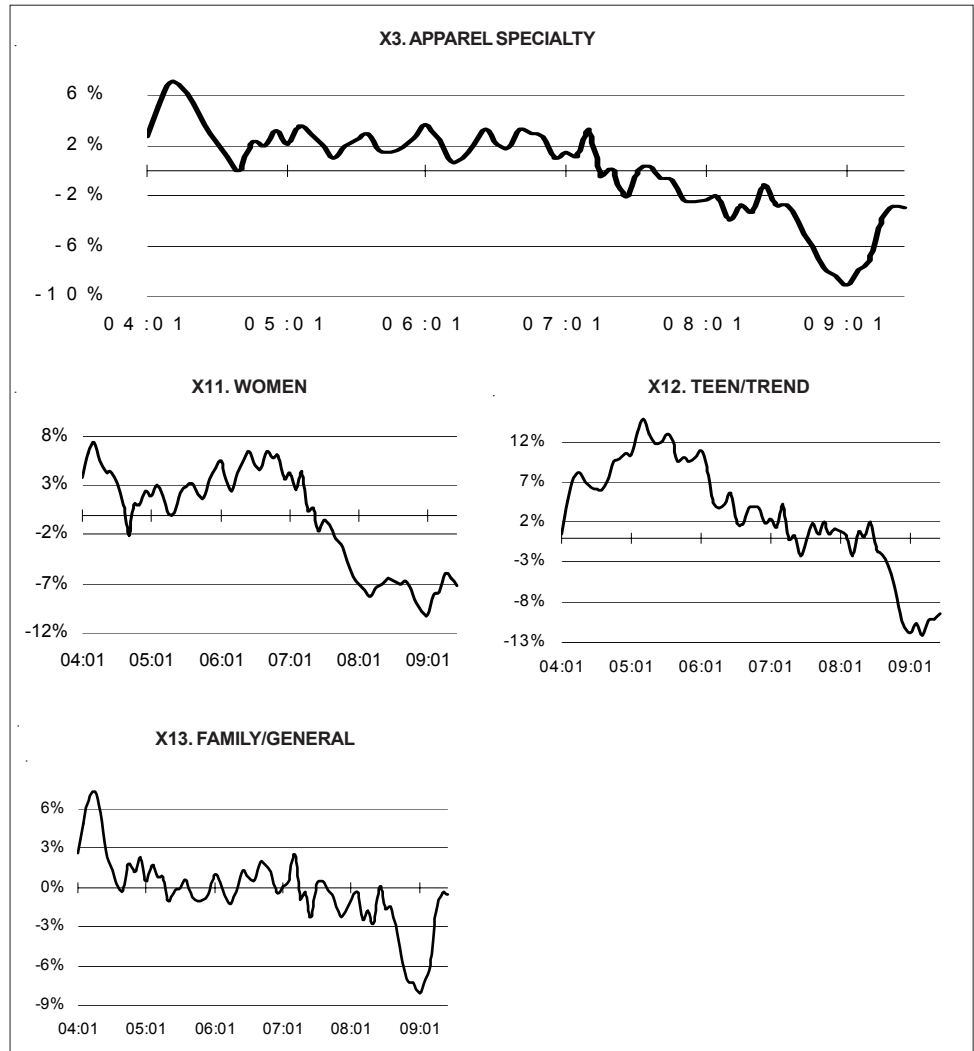
X10. Apparel Sublines same-store yoy %change

	All %	Women %	Teen %	Family %
YEARS				
2009 td	-4.0	-7.7	-11.2	-1.6
2008	-5.4	-8.2	-5.6	-4.5
2007	-0.9	-2.8	1.1	-0.6
2006	1.8	4.5	2.8	0.2
2005	2.4	2.8	11.4	0.0
QUARTERS				
2009:07 td	-4.2	-9.3	-11.7	-1.3
2009:04	-3.9	-6.2	-10.9	-1.8
2009:01	-8.7	-10.2	-11.7	-7.3
2008:10	-5.9	-7.3	-5.4	-5.7
2008:07	-2.6	-6.9	-1.4	-1.5
MONTHS				
2009:06	-5.8	-11.3	-13.6	-2.6
2009:05	-2.2	-6.6	-9.3	0.3
2009:04	-1.0	-3.9	-5.3	0.5
2009:03	-5.2	-8.8	-15.8	-2.0
2009:02	-5.3	-5.5	-9.5	-4.3
2009:01	-11.0	-9.0	-11.4	-11.5
2008:12	-7.6	-10.0	-11.0	-5.6
2008:11	-9.0	-11.4	-13.1	-7.3
2008:10	-8.8	-8.0	-9.4	-8.8
2008:09	-5.7	-7.3	-5.1	-5.3
2008:08	-3.6	-6.8	-3.1	-2.9
2008:07	-3.0	-6.2	-2.2	-2.3
2008:06	-1.6	-8.0	-1.0	0.8
<i>3m avg</i>	<i>-3.2</i>	<i>-7.9</i>	<i>-9.8</i>	<i>-0.7</i>

Data in the table above are at store level, based on the following classification of apparel sublines: **Women:** AnnTaylor, Cato, Destination Maternity, Limited, Wet Seal. **Teen/Trend:** Abercrombie & Fitch, Aeropostal, American, American Apparel, Eagle Outfitters, The Buckle, Hot Topic, Zumiez. **Family/General:** Children's Place, Gap, Ross, Stage Stores, Stein Mart, TJX.

Source: Company reports, Redbook estimates.

APPAREL PERFORMANCE



Charts (X3, X11 to X13) show 3-month trailing average of same-store sales yoy % change as reported monthly by retailers. Groups are sales-weighted. Chart X14 shows apparel same-store sales.

Source: Company reports, Redbook estimates.

COMPANY RANKINGS

same-store yoy %change

Top of the Month

		June 09	June 08
ARO	Aeropostale	12.0	12.0
BKE	The Buckle	9.6	28.9
TLF	Tandy Leather Factory	5.0	-1.0
TJX	TJX Companies	4.0	5.0
WAG	Walgreen	3.4	3.4
ROST	Ross Stores	1.0	8.0
FRED	Fred's	0.2	6.5
RAD	Rite Aid	-0.6	-0.4
CTR	Cato Corp.	-3.0	4.0
DUCK	Duckwall-ALCO	-4.3	0.8

Bottom of the Month

		June 09	June 08
ANF	Abercrombie & Fitch	-32.0	-3.0
NMGa	Neiman Marcus	-20.8	-2.4
ZUMZ	Zumiez	-19.3	-3.4
DDS	Dillard's, Inc.	-14.0	-5.0
APP	American Apparel	-13.0	16.0
SSI	Stage Stores	-12.6	1.2
PLCE	Children's Place	-12.0	18.0
LTD	Limited Inc.	-12.0	-9.0
WTSLA	Wet Seal	-11.1	-2.9
AEOS	American Eagle	-11.0	-11.0

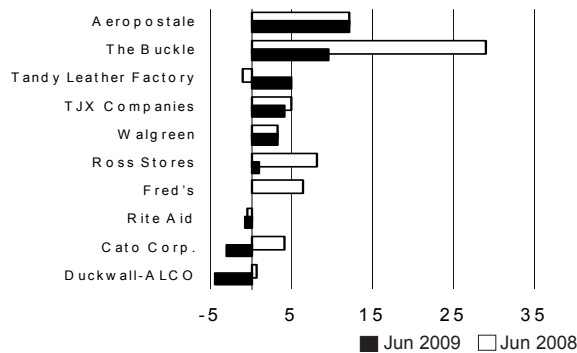
Top of the Year

		YTD 09	YTD 08
BKE	The Buckle	15.2	28.0
ARO	Aeropostale	12.0	10.0
TLF	Tandy Leather Factory	4.0	-3.0
ROST	Ross Stores	3.0	5.0
TJX	TJX Companies	3.0	4.0
DUCK	Duckwall-ALCO	2.2	-4.9
WAG	Walgreen	2.1	4.4
FRED	Fred's	1.7	3.2
HOTT	Hot Topic	1.2	-1.8
CTR	Cato Corp.	1.0	0.0

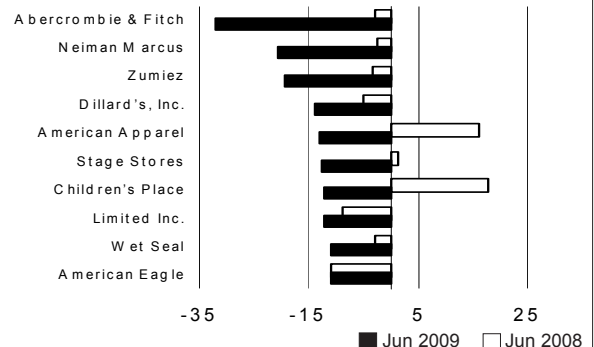
Bottom of the Year

		YTD 09	YTD 08
ANF	Abercrombie & Fitch	-30.0	-3.0
SKS	Saks Inc.	-23.2	4.0
DDS	Dillard's, Inc.	-13.0	-6.0
JWN	Nordstrom	-12.5	-6.2
AEOS	American Eagle	-10.0	-8.0
SSI	Stage Stores	-9.5	-2.9
BONT	Bon-Ton Stores	-9.1	-6.0
LTD	Limited Inc.	-9.0	-8.0
M	Macy's	-9.0	-9.1
GPS	Gap Inc.	-8.0	-11.0

June's Top Performers



June's Bottom Performers



United States

Redbook Research Inc.
10 Waterside Plaza, Suite 5K
New York, NY 10010-2610

Research: +1 646.201.4064
Sales: +1 212.842.8211
Fax: +1 206.350.5486
Toll Free US: +1 888.888.6985
www.redbookresearch.com

Customer service: admin@redbookresearch.com
Billing inquiries: billing@redbookresearch.com
Marketing: marketing@redbookresearch.com
Production: production@redbookresearch.com
Sales: sales@redbookresearch.com
Regional sales: paul.hackett@redbookresearch.com
Technical support: support@redbookresearch.com

Johnson Redbook ® is a registered trademark of Redbook Research Inc. All rights reserved.
This information is provided for informational purposes only. It does not take into account the particular investment objectives, financial situation, or needs of any individual or entity. Under no circumstances is it to be used or considered as an offer to purchase or sell any security, or as a solicitation or recommendation of the purchase, sale, or offer to purchase or sell, any security. While the information has been obtained from sources deemed reliable, neither Redbook Research nor its licensors, nor any other party through whom the user obtains any such information: (i) makes any guarantees that it is accurate, complete, timely, or contains correct sequencing of information; (ii) makes any warranties with regard to the results obtained from its use; or (iii) shall have any liability for any claims, losses, or damages arising from or occasioned by any inaccuracy, error, delay, or omission, or from the use of the information or actions taken in reliance on the information. Reproduction or redistribution of this information is prohibited except with written permission.